

Polo Wimbledon Lady

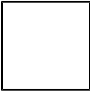



Polo sportiva

- 100% poliestere
- Colletto in rib
- Tre bottoni in tinta per la versione Man e Boy, quattro per la versione Lady
- Nastro di rinforzo interno collo
- Fondo manica aperto con cucitura a due aghi
- Imbustate singolarmente

S - M - L - XL

Colori e codici articolo:

 997960 WHITE

 997961 BLACK


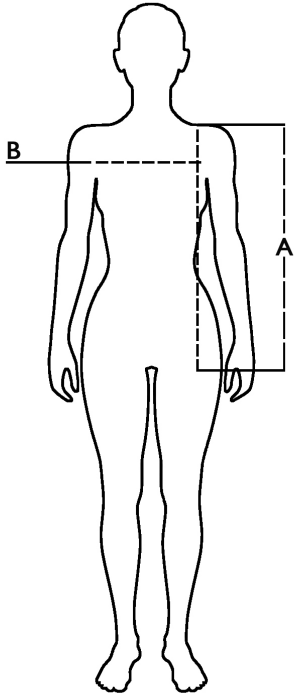


 997962 FUCSIA

Tabella misure

Taglie / Sizes (+/- 5%)	A lunghezza / front lenght	B torace / chest
XS	61	40
S	63	42
M	65	44
L	67	46
XL	69	48



Descrizione tecnica

	Composizione / Fabric Composit	 g/m ²
Tessuto esterno/Shell	100% poliestere	130
Imballo/Packages	 60 pcs	
Istruzioni di Lavaggio / Care Label	