

JRCJames Ross Collection
WeAr the Future

James Ross Collection

SCHEMA TECNICA

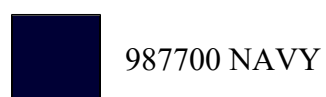
JRCJames Ross Collection
WeAr the Future

Giubbotto America

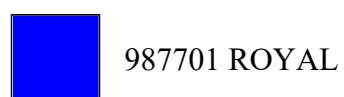
**Giubbotto in poliestere pongee impermeabile**

- Spalmatura in PVC impermeabile
- Imbottitura in poliestere
- Maniche staccabili
- Fodera in poliestere
- Cappuccio estraibile in poliestere pongee
- Profili rifrangenti
- Tasca sul petto con portabadge a scomparsa
- Due doppie tasche con patta e chiusura con velcro
- Due tasche con zip con fodera rinforzata per utensili
- Tasca interna portafoglio
- Polsino con elastico regolabile con velcro
- Coulisse al fondo
- Bottoni automatici in metallo

XS - S - M - L - XL - XXL - 3XL - 4XL

Colori e codici articolo:

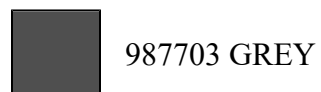
987700 NAVY



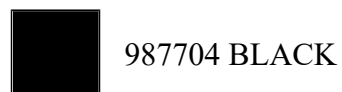
987701 ROYAL



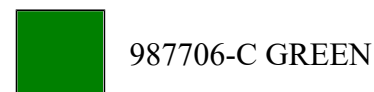
987702 RED



987703 GREY



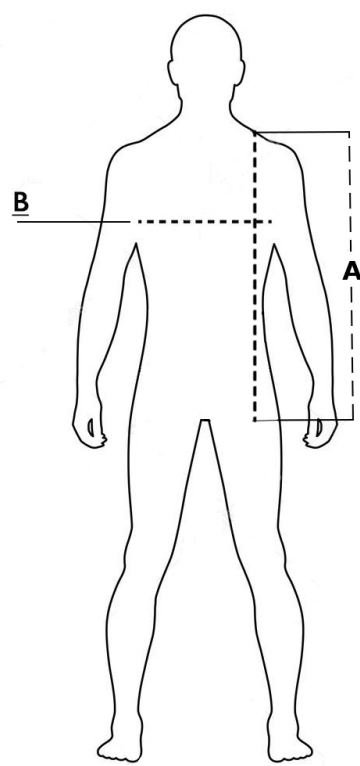
987704 BLACK






987706-C GREEN

Tabella misure

| Sizes (+/- 5%) | A front length | B chest |
|----------------|----------------|---------|
| XS | 65,5 | 57 |
| S | 67,5 | 59 |
| M | 69,5 | 61 |
| L | 71,5 | 63 |
| XL | 72,5 | 65 |
| XXL | 74,5 | 67 |
| 3XL | 76,5 | 69 |
| 4XL | 78,5 | 71 |

**Descrizione tecnica**

| | Composizione / Fabric Composit |  g/m ² |
|-------------------------------------|--|--|
| Tessuto esterno/Shell | 100% Poliestere | 195 |
| Fodera/Lining | 100% Poliestere | 50 |
| Imbottitura/Padding | 100% Poliestere | 180 |
| Imballo/Packages |  10 pcs | |
| Istruzioni di Lavaggio / Care Label |  | |

Cat. DPI/PPE category I Norme **CE** e livelli di protezione/EC standards and protection levels EN ISO 13688:2013